



TOZE FIGUEIREDO

Male, Expressionist Artist Painter
DOB. 27 September 1965, Viseu, Portugal
Resident in London, UK
Email toze@live.co.uk

(1966-1971) Viersen, Germany
(1971-1990) Viseu, Portugal
(1990-2000) Toronto, Canada
(2000-2003) Viseu, Portugal
(2003-2017) London, UK

University of the Arts London
Elephant and Castle, graphic design, 2004

Art Exhibitions:

_Galeria Corte Real - Toronto, Canada - 1999
_The Rivoli - Toronto, Canada - 1999
_Here & Now Gallery - Toronto, Canada - 2000
_Salt Studio - Toronto, Canada - 2000
_Galeria IPJ - Viseu, Portugal - 2001
_Agirarte - Oliveira do Hospital, Portugal - 2001
_Rampart - London, England - 2009

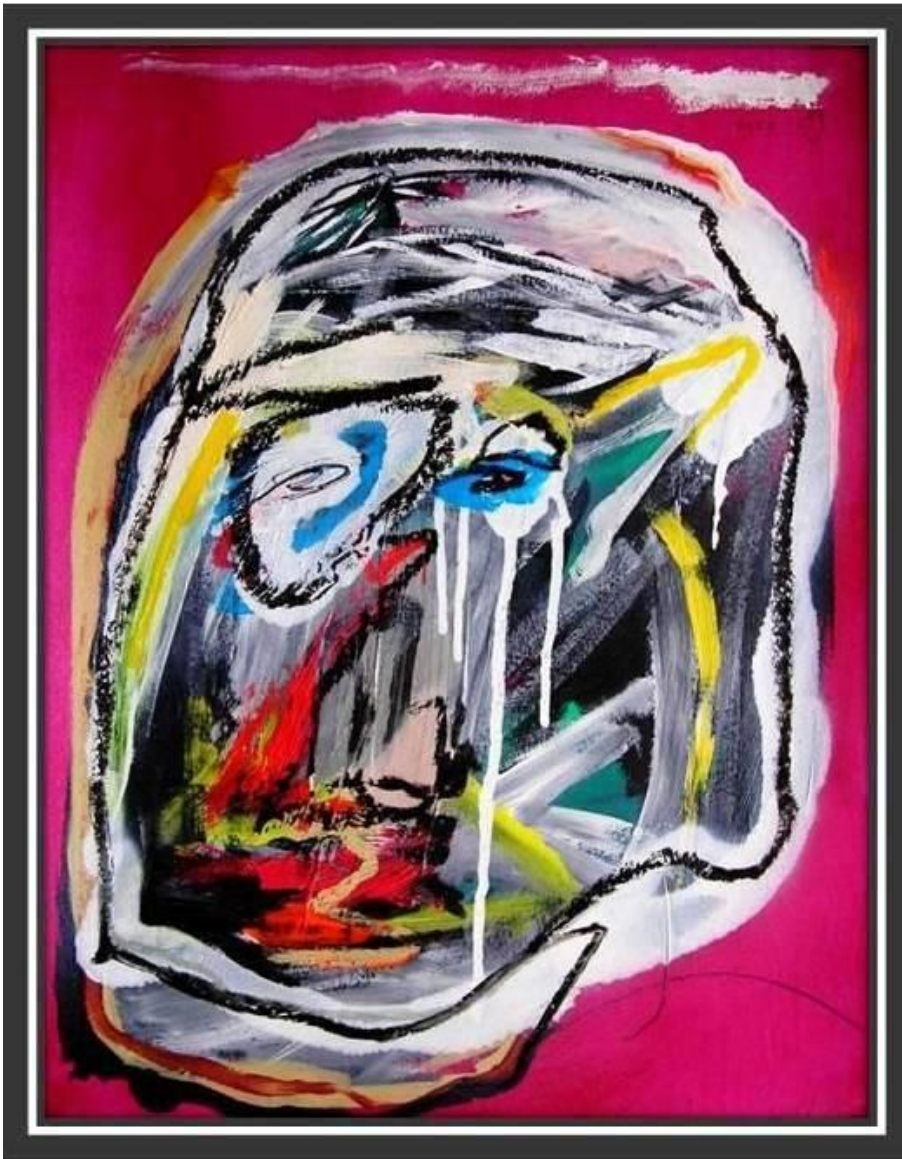
- _Art Now Gallery - Gotheborg, Sweden - 2010 & 2011
- _Siel de Paris at Drouot Montaigne - Paris, France - 2011
- _Connoisseur's Gallery - Paris, France - 2012
- _Galerie En ApARThe' - Paris, France - 2012
- _GalerieART - Aizelles, France - 2012
- _Jordi Miguel Galeria d'Art - Barcelona, Spain - 2015
- _The Cult House, Fusion @ Hoxton Arches - London, UK - 2015

STATEMENT

Painting in an adventurous spirit lost in translation after the Time is gone!
Expressive thoughts about the relationships between ones emotions and the ever-changing situations - the mysteries and the complexities of life - with the subjects mixed in conformity with a variation of feelings and emotions.
And he is continuing with the path where the contrasts are obvious and conjunctive, the fruits of the palm tree always tracking his mind in the scope for the light.

Painting to give to people the idea of freedom, peace and human dignity, joy and love to give, the grievances and problems of our world and surroundings noted, as a voice is free and can be influenced by anything. The common denominators of humanity - passion, alienation, courage, community - emerge with the simplest occupations of daily existence.

The painting is supposed to be emotional, spontaneous expression and social criticism. I want to point out, shake people, touch the emotions that change the world for the better.



SILVER HEAD - 2012 (39 x 30 cm) acrylic, oilstick and spraypaint on paper

☺ Hello Toze!

1.Q: How all this begun ? as a hobby or as a passion ?

A: Painting came as a shock, I got surprised!

I started painting in 1991 somehow after reading old literature.

2.Q: What is your conception about art and the world ?

A: Art making is privacy being fixed. I arrange it to inform.

3.Q: If you were not a painter what would you be ?

A: Into electrics, probably.

4.Q: There are moments when you do not work out at all what the mind-eye can see and abandon work ?

If so, how do you get over it ?

A: If I "force" myself into painting, yes that happens...

5.Q: How often do you let yourself be influenced by others opinions ?

A: I don't get much opinion; I just do my thing quietly...

6.Q: What do you think it propels a dedicated painter ? Talent, luck or criticism ?

A: Talent and his supported energy is the main channel to have a good time painting.

7.Q: I know you are from Portugal. As a painter the place where you come from did influence your work ?

A: Yes, places influences work.

8.Q: What are the sources of inspiration for your paintings ?

A: Life and the romantic feeling of leaving behind some artwork, that keeps me going.

9.Q: Do you paint what you feel, without thinking at decoding the painting ?

A: Usually I have a plan but all that can change... yes mystery!

Thank you for your time! :)

Thank you all, being a pleasure!

" For some reason, on Easter Sunday 2000, Toze arrived in Portugal back from Toronto. The toil... and finally his paintings were surprising him again, art cleaned than ever!

Time directed him and some friends to Somerset, England... and they revolved the little village to have some fun; The village people started to run away from them...

In six months the town was transformed, with crawling voices from the dark nature, pointed fingers from people and they got dust... well, this kind of ambiances, between rude reality and naïf fantasy are the juice of Toze paintings.

So away again from hell, or maybe the circus became too hard out there in Somerset. This was the time when we met Toze in London, probably we were there for similar reasons. At that time he was living in a squat, a house where strangers meet like in most of the squats in London. Some of his friends from the Somerset adventure where there, but not all of them, different characters at this time, all of them trying to survive in a rude but creative way of living. Madness again.....

Recalling him painting in this posh room with exotic furniture found on the street... there was a doped TV set always on, and a old car inside the room as a fridge... imagine the lives of adventurous spirits lost in translation after the time is gone!... this is the spirit of Toze paintings, expressive thoughts about the relationships between ones emotions and the ever-changing situations, the mysteries and the complexities of life, with the subjects mixed in conformity with a variation of feelings and emotions.

And he has continuing with his path where the contrasts are obvious and conjunctive, the fruits of the palm trees always tracking his mind in the scope for the light... "



UNTITLED (WRITE DOWN) - 2007 (74 x 59 cm) mixed media on canvas



EASY MAKER - 2007 (66 x 46 cm) acrylic and mixed media on canvas